

# DISPOSABLE PLASTICWARE



## BOECO TOP-LINE HIGH QUALITY THIN WALLED PCR-TUBES

PP, Certified to be free of any detectable human DNA, DNase, RNase and PCR-inhibitors.

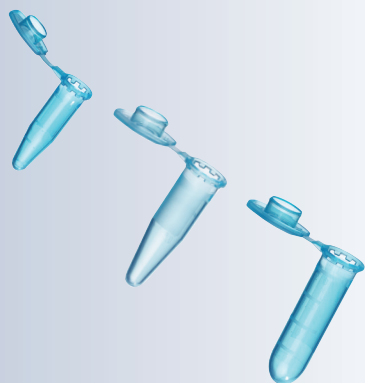
Capacity	Colour	Code	Pcs./bag	Pcs./case
0,2 ml	natural	BOE 3-010-80-0	1.000	10.000



## BOECO TOP-LINE HIGH QUALITY MICRO TUBES

PP, Certified to be free of any detectable human DNA, DNase, RNase and PCR-inhibitors.

Capacity	Colour	Code	Pcs./bag	Pcs./case
0,5 ml	natural	BOE 3-115-80-0	1.000	10.000
1,5 ml	natural	BOE 3-205-85-0	1.000	8.000
2,0 ml	natural	BOE 3-204-85-0	1.000	8.000



## MICROTEST TUBES,

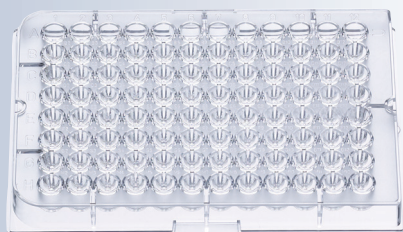
PP, graduated, with cap

### SafeFit cap

Capacity	Colour	Code	Pcs./bag	Pcs./case
0,5 ml	natural	BOE 02.053.0100	1.000	10.000
1,5 ml	natural	BOE 02.063.0100	1.000	8.000
2,0 ml	natural	BOE 02.043.0100	1.000	8.000

### EasyFit cap

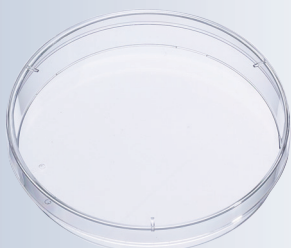
Capacity	Colour	Code	Pcs./bag	Pcs./case
1,5 ml	natural	BOE 02.023.0100	1.000	8.000
1,5 ml	blue	BOE 02.023.0101	1.000	8.000
1,5 ml	red	BOE 02.023.0102	1.000	8.000
1,5 ml	yellow	BOE 02.023.0103	1.000	8.000
1,5 ml	green	BOE 02.023.0104	1.000	8.000



## MICROTEST PLATES

96-well, crystal clear, PS, machinesterile

Type	Code	Pcs./bag	Pcs./case
U-shape	BOE 05.011.0100	5	100
V-shape	BOE 05.021.0100	5	100
F-shape	BOE 05.031.0100	5	100
Lid	BOE 05.041.0100	5	100



## PETRI DISHES

for bacteriology, 94 x 16 mm, crystal clear, PS, machinesterile

Type	Code	Pcs./bag	Pcs./case
with vents	BOE 04.031.2100	20	480
without vents	BOE 04.041.2100	20	480

## CENTRIFUGE TUBES

16x100 mm, round bottom

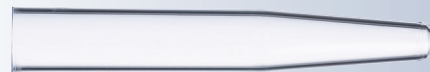
Capacity	Material	Code	Pcs./bag	Pcs./case
12 ml	PS	BOE 01.011.0100	1.000	2.000
12 ml	PP	BOE 01.013.0100	1.000	2.000



## SEDIMENTATION TUBES

16x105 mm, conical pointed, clear PS

Capacity	Material	Code	Pcs./bag	Pcs./case
12 ml	PS	BOE 01.021.0100	1.000	2.000



## SPECIAL RIBBED STOPPERS

LD-PE, for test tubes with 16 mm diam.

Colour	Material	Code	Pcs./bag	Pcs./case
natural	LD-PE	BOE 01.604.0100	1000	10.000
blue	LD-PE	BOE 01.604.0101	1000	10.000
red	LD-PE	BOE 01.604.0102	1000	10.000
yellow	LD-PE	BOE 01.604.0103	1000	10.000
green	LD-PE	BOE 01.604.0104	1000	10.000



## COAGULOMETER TUBES

12x55 mm, round bottom, clear PS

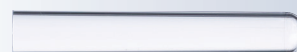
Capacity	Material	Code	Pcs./bag	Pcs./case
3,5 / 4 ml	PS	BOE 01.031.0100	1000	5.000



## TEST TUBES

12x75 mm, round bottom

Capacity	Material	Code	Pcs./bag	Pcs./case
4,5 ml	PS	BOE 01.051.0100	1000	4.000



## SPECIAL RIBBED STOPPERS

LD-PE, for test tubes with 12 mm diam.

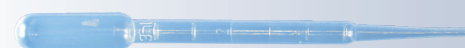
Colour	Material	Code	Pcs./bag	Pcs./case
natural	LD-PE	BOE 01.624.0100	1000	20.000
blue	LD-PE	BOE 01.624.0101	1000	20.000
red	LD-PE	BOE 01.624.0102	1000	20.000
yellow	LD-PE	BOE 01.624.0103	1000	20.000
green	LD-PE	BOE 01.624.0104	1000	20.000



## DISPOSABLE PASTEUR PIPETTES

Polyethylene

Cat. No.	Type	Pcs./box	Pcs./case
BOE 204325	1,0 ml, graduated, 150 mm, non-sterile	500	5000
BOE 204323	3,0 ml, Macro graduated, 150 mm, non-sterile	500	3000



## STERILE DISPOSABLE SEROLOGICAL PIPETTES

With hydrophobic polyester stopper.

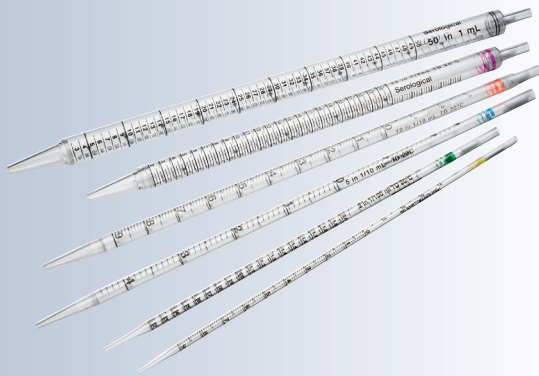
Volumetric Accuracy  $\pm 2\%$  ( $\pm 3\%$  for 1 & 2ml) as by ASTM E394/ISO 12771

Non pyrogenic, non cytotoxic,

DNase/RNase free, BSE/TSE free

Individually wrapped in paper/plastic peel pack.

Gammasterile as by requirements of ANSI/AAMI/ISO 11137



Vol.	Increm.	Color Code	Code	Pcs./bag	Pcs./case
1 ml	1/0,01 ml	yellow	BOE 357770	100	1000
2 ml	1/0,01 ml	green	BOE 357771	100	1000
5 ml	1/0,10 ml	blue	BOE 357772	50	200
10 ml	1/0,10 ml	red	BOE 357773	50	200
25 ml	1/0,25 ml	magenta	BOE 357774	50	200
50 ml	1/1,00 ml	black	BOE 357775	25	100

## CONICAL CENTRIFUGE TUBES, PP

„BOECO Germany“ with blue screw cap, printed graduation and writing surface, free of RNA, DNA, RNase, DNase, Pyrogen, Endotoxin.

Gammasterile.

Max centrifugation: 15 ml tubes up to 17.000 RCF

50 ml tubes up to 20.000 RCF



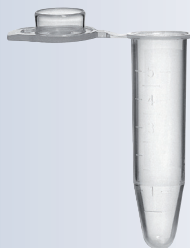
Vol.	Size	Code	Pcs./bag	Pcs./case
15 ml	17x120	BOE 9640015	25	500
50 ml	30x115	BOE 9640050	25	500

## MICRO CENTRIFUGE TUBES

PP, attached cap, natural, graduated, with writing area,

max. RCF 25.000g, autoclavable at 121°C

Free of any detectable human DNA, DNase, RNase and PCR-inhibitors.



Capacity	Sterility	Code	Pcs./bag	Pcs./case
5,0 ml	nonsterile	BOE 04-252-1000	200	4.000
5,0 ml	sterile R	BOE 04-252-9000	200	4.000

## DISPOSABLE CUVETTES

MACRO



SEMI-MICRO



Code	Description
BRA 759007	Disposable Macro Cuvettes, PS, Window: 10 x 35 mm; 10 mm light path Filling volume: min 2,5 / max 4,5 ml grouped by mold cavity number, neutral packing Wavelength: from 340 to 900 nm Packing: 100 pcs./box, 1000 pcs./carton
BRA 759017	Disposable Semi-Micro Cuvettes, PS, Window: 4,5 x 23 mm; 10 mm light path Filling volume: min 1,5 / max 3,0 ml grouped by mold cavity number, neutral packing Wavelength: from 340 to 900 nm Packing: 100 pcs./box, 1000 pcs./carton