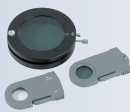


BIOLOGICAL MICROSCOPES

BOECO LABORATORY BINOCULAR MICROSCOPE MODEL BM-800



POLARISATION SET



PHASE CONTRAST KIT



EPI-FLUORESCENT ATTACHMENT



Specification BM-800:

- Optical System: Infinite corrected system, field diameter 22 mm
Viewing Head: Bin- or Trinocular compensation free head, 30° inclined, 360° rotatable, Interpupillary distance 48 - 75 mm
Nosepiece: Backward quintuple revolving nosepiece
Eyepiece: Larger viewing area with extra wide field eyepiece EW 10X /22 mm
Objectives: BOECO Infinite corrected Plan Achromat Objectives 4x/0.10, 10x/0.25, 40x/0.65 (S), 100x/1.25 (S, Oil)
Stage: Large sized double layer mechanical specimen stage. 185 x 142 mm, Moving range 75 x 55 mm,
Focusing: Coaxial coarse and calibrated fine focus control, fine division 0,001 mm, Coarse stroke 37,7mm/rotation fine stroke 0,1mm/rotation, mowing Range 24 mm safety autofocus stop unit.
Condenser: Swing condenser, N.A. 0,9/0,25
Field diaphragm: With aspherical condenser and Köhler illumination.
Illumination: 6V 30W inbuilt halogen lamp*, brightness adjustable.
Body / power: Modern and ergonomic body made from die-cast aluminium with inbuilt power supply 110-240V, 50/60Hz
Supplied with: Dust cover, immersion oil, 1 spare halogen lamp, green + blue filter and instruction manual
Dimensions: 280 x 358 x 304/416 mm, net weight 10,0/10,4 kgs

Code	Description	Head	Plug
BOE 8000.550	BM-800/I/PL	Binocular	Euro
BOE 8000.551	BM-800/I/PL	Binocular	US
BOE 8000.560	BM-800/T/I/PL	Trinocular	Euro
BOE 8000.561	BM-800/T/I/PL	Trinocular	US

Accessories

Code	Description
BOE 8000.301	EW eyepiece 10X/22mm
BOE 8000.302	EW eyepiece 10x/22mm with pointer
BOE 8000.303	EW eyepiece 10x/22mm with micrometer
BOE 8000.552	BOECO Infinite E Plan Achrom. Objective 4X
BOE 8000.553	BOECO Infinite E Plan Achrom. Objective 10X
BOE 8000.559	BOECO Infinite E Plan Achrom. Objective 20X
BOE 8000.554	BOECO Infinite E Plan Achrom. Objective 40X (S)
BOE 8000.555	BOECO Infinite E Plan Achrom. Objective 100X (S) (Oil)
BOE 8000.305	Dark Field Condenser (Dry) NA 0,7-0,9
BOE 8000.306	Dark Field Condenser (Oil) NA 1,25-1,36
BOE 1800.419	Objective 100X plan-achrom. for Dark field cond. (Oil)
BOE 8000.325	Simple Polarization set
BOE 8000.802	1x Video Attachment with C mount
BOE 8000.903	Turret Annular Phase Contrast Kit, consisting of: Phase Contrast Infinity Plan-achromatic Objectives 10X,20X(S), 40X(S), 100X(S,Oil), Turret Annular Phase, Contrast Condenser, Centering Telescope, Green Filter
BOE 8000.906	Epi-Fluorescent Attachment B (Blue) BP460-495, G (Green) BP 510-550 Excitation Light Filter system, O Ordinary Light System, 100WHBO Ultra Hi-voltage Spherical Mercury Lamp, Barrier to resist the Ultraviolet light, Power Supply with Digital Display, AC Input 100-240V
BOE 8000.923	Infinite Plan Fluorescence Free Obj. 4X
BOE 8000.924	Infinite Plan Fluorescence Free Obj. 10X
BOE 8000.925	Infinite Plan Fluorescence Free Obj. 20X
BOE 8000.926	Infinite Plan Fluorescence Free Obj. 40X
BOE 8000.927	Infinite Plan Fluorescence Free Obj. 100X
BOE 8000.908	U (ultraviolet) BP330-385 Excitation light filter system
BOE 8000.909	V (violet) BP400-410 Excitation light filter system

*Optional with 5W LED illumination - without blue filter and spare lamp

BOECO INVERTED BIOLOGICAL MICROSCOPE MODEL BIB-100

Specification BIB-100:

Optical System:	Infinite corrected system, field diameter 22 mm
Viewing Head:	Bin- or Trinocular Head, 30° inclined, 360° rotatable, Interpupillary Distance 48 - 75 mm
Nosepiece:	Quintuple revolving nosepiece
Eyepiece:	High-point, Extra Wide Field Eyepiece EW 10X /22 mm
Objectives:	LWD Infinite corrected Plan Achromat Objective 4X/0,1 WD 28 mm LWD Infinite corrected Plan Achromat Objective 40X/0,6 WD 2.1 mm Infinite corrected Plan Achromat Phase Objective 10X/0,25 WD 10 mm Infinite corrected Plan Achromat Phase Objective 20X/0,4 WD 5.1 mm
Condenser:	ELWD condenser N.A. 0,3. LWD 72 mm (without condenser 150 mm)
Centering	Centering Telescope 30 mm diam. Telescope Phase Annulus 10X - 20X Phase Annulus Plate
Stage:	Plain Stage 160 x 250 mm, Glass Insert Auxiliary Stage 70 x 180 mm Attachable Mechanical Ruler
Focusing:	Coaxial coarse and fine adjustment. Vertical objective movement, Coarse stroke 37.7 mm per rotation, Fine Stroke: 0,2 mm per rotation
Filter:	Diameter 45 mm, blue, green and ground glass
Illumination:	3W LED lamp, brightness adjustable.
Body:	Innovative stand structure
Power:	Inbuilt power supply 100-240V, 50/60Hz
Weight:	Net weight 11,0 / 11,7 kgs.

Supplied with: Dust cover, immersion oil and instruction manual

Code	Description	Head	Plug
BOE 5000.900	BIB-100	Binocular	Euro
BOE 5000.901	BIB-100/	Binocular	US
BOE 5000.930	BIB-100/T	Trinocular	Euro
BOE 5000.531	BIB-100/T	Trinocular	US

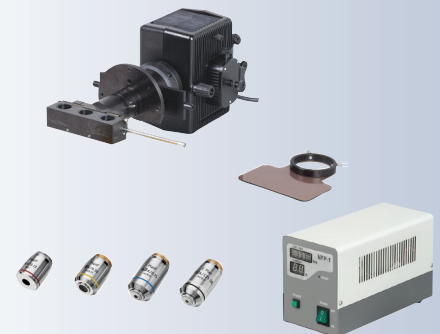
Optional Accessories

Code	Description
BOE 5000.220	Terasaki Holder
BOE 5000.221	35 mm diam. Petri dish holder
BOE 5000.222	54 mm diam. Slide glass holder

BOE 5000.906 Inverted Fluorescent Attachment for BIB-100,
without objectives



HOLDERS



BOECO BINOCULAR MICROSCOPE MODEL BM-700

Our advanced biological Microscope for educational, teaching, life science and clinical applications. The Anti-Fungus treatment protects the optical system, objectives and eyepieces in high-humidity environments. The new designed F=200 mm Infinite Plan achromatic objectives provide a fully corrected image for clear visual and digital results.

Specification BM-700:

- Optical system: Siedentopf Binocular Head, 30° inclined, 360° rotatable, with high quality infinite optical system
- Nosepiece: Backward quadruple revolving nosepiece
- Eyepiece: Pair Eyepiece WF 10X /20 mm, diopter adjustable, with anti fungus treatment, Interpupillary Distance 47-75 mm
- Objectives: BOECO Anti Fungus Infinite Plan Achromat Objectives 4x, 10x, 40x, 100x (S) (Oil)
- Stage: Double layer mechanical specimen stage. 216 x 150 mm moving range 78 x 54 mm, Right hand stage handle
- Focusing: Low position, coaxial coarse and calibrated fine focus control, with graduation reading 2 microns per division. Total focusing range 24 mm, Safety stop unit.
- Condenser: Sliding-in centerable Abbe Bright field condenser, N.A. 1,25, Integrated Iris diaphragm and filter tray.
- Illumination: 3W LED lamp, Koehler illumination, brightness adjustable.
- Body /power: Sturdy body with supportive rubber and inbuilt power supply 100 - 240V, 50/60 Hz
- Supplied with: Dust cover, green filter, immersion oil and instruction manual
- Dimensions: 204 x 376 x 406 mm
- Weight: Net weight 7,0 / 7,2 kgs
- Packing: styrofoam shelfe in a cardboard box



BACK HANDLE / POWER CORD WRAP



ANTI FUNGUS TREATED OBJECTIVES



KOEHLER ILLUMINATION / SLIDING-IN ABBE BRIGHT FIELD CONDENSER



BIG RACKLESS MECHANICAL STAGE WITH ANTI SCRATCH GRAPHITE TREATMENT

Code	Description	Head	Plug
BOE 7000.570	BM-700/I/PL	Binocular	Euro
BOE 7000.571	BM-700/I/PL	Binocular	US
BOE 7000.580	BM-700/T/I/PL	Trinocular	Euro
BOE 7000.581	BM-700/T/I/PL	Trinocular	US

Objectives for BM-700

Code	Description
BOE 7000.552	BOECO Infinite Plan Achromatic AF Obj. 4X
BOE 7000.553	BOECO Infinite Plan Achromatic AF Obj. 10X
BOE 7000.559	BOECO Infinite Plan Achromatic AF Obj. 20X
BOE 7000.554	BOECO Infinite Plan Achromatic AF Obj. 40X (S)
BOE 7000.555	BOECO Infinite Plan Achromatic AF Obj. 100X (S) (Oil)

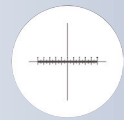


Accessories for BM-700

Code	Description
BOE 7000.303	WF eyepiece 10x/20mm with Micrometer
BOE 7000.302	WF eyepiece 10x/20mm with Pointer
BOE 7000.307	WF eyepiece 10x/22mm
BOE 7000.304	Eyeiece 15x/16mm
BOE 7000.305	Dark Field Condenser (Dry) NA 0,7-0,9
BOE 7000.306	Dark Field Condenser (Oil) NA 1,36-1,25
BOE 7000.325	Polarisation attachment
BOE 7000.903	Phase Contrast kit, dial type. Consisting of Phase Contrast Infinite Plan-achromatic Objectives 10X, 40X, 100X(S,Oil), Turret Annular Phase Contrast Condenser, Green Filter
BOE 7000.906	Epi-Fluorescent attachment, power supply, mercury lamp, blue and green filter
BOE 7000.907	Epi-Fluorescent attachment FL-LED, with B excitation filter (465-475 nm blue) and LED lamp



EYEPIECE WITH POINTER



EYEPIECE WITH MICROMETER



DARK FIELD CONDENSER DRY AND OIL TYPE



POLARIZATION ATTACHMENT



PHASE CONTRAST CONDENSER (DIAL)



BM-700 WITH FL-LED

BOECO BINOCULAR MICROSCOPE MODEL BM-250/I/SP

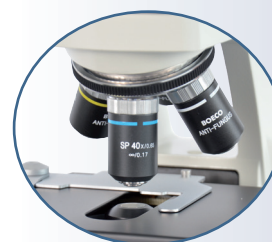
Specification BM-250/I/SP:

Optical System:	Siedentopf Viewing Head, 30° inclined, 360° rotatable, with Infinite corrected optical system. interpupillary Distance 47 - 78 mm, diopter adjustable (left side)
Nosepiece:	Backward quadruple revolving nosepiece
Eyeiece:	Pair Eyeiece WF 10X /20 mm Wide field
Objectives:	BOECO Anti Fungus Infinite Semi-plan Achromat Objectives F=180 mm: 4x, 10x, 40x (S), 100x (S) (Oil)
Stage:	Rackless Double layer mechanical specimen stage. 150 x 139 mm, moving range 75 x 52 mm, Right hand stage handle
Focusing:	Low position, coaxial coarse and calibrated fine focus control, with graduation reading 2 microns per division. Total focusing range 25 mm, Safety stop unit.
Condenser:	Abbe Bright field condenser, N.A. 1,25, Integrated Iris diaphragm and filter tray, with rack & pinion height adjustment
Illumination:	S-LED, brightness adjustable.
Body / power:	Sturdy body with supportive rubber and inbuilt power supply, 100-240V, 50/60Hz
Supplied with:	Dust cover, green filter, immersion oil, instruction manual
Dimensions:	208(W) x 266(D) x 370(H) mm
Weight:	Net weight 7,1 / 7,3 kgs
Packing:	Styrofoam shelve in a cardboard box

Code	Description	Head	Plug
BOE 2500.200	Model BM-250/I/SP	Binocular	Euro
BOE 2500.201	Model BM-250/I/SP	Binocular	US
BOE 2500.230	Model BM-250/T/I/SP	Trinocular	Euro
BOE 2500.231	Model BM-250/T/I/SP	Trinocular	US

BOE 3000.512	BOECO Infinite Semi-Plan Achromatic AF Obj. 4X
BOE 3000.514	BOECO Infinite Semi-Plan Achromatic AF Obj. 10X
BOE 3000.516	BOECO Infinite Semi-Plan Achromatic AF Obj. 40X(S)
BOE 3000.517	BOECO Infinite Semi-Plan Achromatic AF Obj. 100X (S) (Oil)

EW 10X/20MM EYEPIECES



ANTI FUNGUS TREATED OBJECTIVES



RACKLESS MECHANICAL STAGE

BOECO BINOCULAR MICROSCOPE MODEL BM-190 SP

Specification BM-190/SP:

Magnification: 40X- 1000X
 Optical system: Siedentopf Viewing Head, 30° inclined, 360° rotatable, Interpupillary Distance 47 - 78 mm, diopter adjustable (left)
 Nosepiece: Backward quadruple revolving nosepiece
 Eyepiece: Pair Eyepiece WF 10X /18 mm Widefield
 Objectives: BOECO Semi-plan Achromat DIN Objectives 4x/0.10, 10x/0.25, 40x/0.65 (S), 100x/1,25 (S, Oil)
 Stage: Double layer mechanical specimen stage. 140 x 140 mm moving range 75 x 50 mm, Right hand stage handle
 Focusing: Low position, coaxial coarse and calibrated fine focus control, with graduation reading 2 microns per division. Total focusing range 25 mm, Safety stop unit.
 Condenser: Abbe Brightfield condenser, N.A. 1,25, Integrated Iris diaphragm and filter tray. With rack & pinion height adjustment
 Illumination: S-LED, brightness adjustable.
 Body / power: Sturdy body with supportive rubber and inbuilt power supply 100-240V, 50/60 Hz
 Supplied with: Dust cover, green filter, immersion oil, instruction manual
 Dimensions: 208(W) x 266(D) x 370(H) mm
 Weight: Net weight 6,9 / 7,2 kgs.
 Packing: Styrofoam shelf in a cardboard box



TRINOCULAR MODEL
BM-190/T/SP



POWER CORD WRAP IN THE
BACK

Code	Description	Head	Plug
BOE 1900.200	BM-190/SP	Binocular	Euro
BOE 1900.201	BM-190/SP	Binocular	US
BOE 1900.230	BM-190/T/SP	Trinocular	Euro
BOE 1900.231	BM-190/T/SP	Trinocular	US

Objectives for BM-190/SP, BM-180/SP

Code	Description
BOE 1800.413	BOECO Black Semi-Plan Achromat DIN Obj. 4X
BOE 1800.414	BOECO Black Semi-Plan Achromat DIN Obj. 10X
BOE 1800.418	BOECO Black Semi-Plan Achromat DIN Obj. 20X
BOE 1800.415	BOECO Black Semi-Plan Achromat DIN Obj. 40X (S)
BOE 1800.416	BOECO Black Semi-Plan Achromat DIN Obj. 100X (S)(Oil)



Eyepieces for BM-190, BM-180, BM-120, BM-117, N-10

Code	Description
BOE 1800.301	Wide Field Eyepiece WF 10x, pc.
BOE 1800.302	Wide Field Eyepiece WF 10x with Pointer, pc.
BOE 1800.303	Wide Field Eyepiece WF 10x with 0,1 Micrometer, pc.
BOE 1800.304	Eyepiece P 16x, pc.

Dark Field Condensers for BM-180/SP, BM-190/SP

Code	Description
BOE 1800.305	Dark Field Condenser (Dry) NA 0-7-0,9
BOE 1800.306	Dark Field Condenser (Oil) NA 1,25-1,36
BOE 1800.412	Achromatic Objective 100X for Dark Field (Oil) with cone diaphragm
BOE 1800.417	Plan-Achromatic Objective 100X for Dark Field (Oil) with Iris Diaphragm



Phase Contrast Kits for BM-180/SP, BM-190/SP

Code	Description
BOE 1800.902	Annular Phase Contrast Kit, consisting of: Simple Phase Contrast Achromatic Objectives & Diaphragms PH10X, PH40X & PH100X, Centering Telescope
BOE 1800.903	Turret Annular Phase Contrast Kit, consisting of: Phase Contrast Plan-achromatic Objectives 10X, 20X(S), 40X(S), 100X(S,Oil), Turret Annular Phase Contrast Condenser, Centering Telescope, Green Filter
BOE 1800.904	Sliding Phase Contrast Kit, consisting of: Sliding Phase Contrast Condenser, Green Filter Plan achromatic Phase Contrast Objectives PH10X, PH40X, Centering Telescope



Epi-Fluorescent Attachments for BM-180/SP, BM-190/SP

Code	Description
BOE 1800.906	Epi-Fluorescent attachment complete set B (Blue), G (Green) Excitation Light Filter system, O Ordinary Light System, 100WHBO Ultra Hi-voltage Spherical Mercury Lamp, Barrier to resist the Ultraviolet light, Power Supply with Digital Display, AC Input 100-240V, Fluorescent Free Objective 4X, 10X, 40X(S), 100X(S)(Oil), Fluorescent Free Oil
BOE 1800.908	U (ultraviolet) Excitation light filter system
BOE 1800.909	V (violet) Excitation light filter system



BOECO ROUTINE BINOCULAR MICROSCOPE MODEL BM-120

Magnification:	40X- 1000X
Optical System:	Compensation Free Binocular Head, 30° inclined, 360° rotatable, Interpupillary Distance 55 - 75 mm
Nosepiece:	Quadruple revolving nosepiece
Eyepiece:	Pair Eyepiece WF 10X /18 mm Wide field
Objectives:	BOECO Achromat DIN Objectives 4x/0.10, 10x/0.25, 40x/0.65 (S), 100x/1.25 (S, Oil)
Stage:	Double layer mechanical specimen stage. 140 x 140 mm moving rane 75 x 50 mm,
Focusing:	Coaxial coarse and Fine Focus Adjustment, Range 20mm Fine Division 2 microns, safety stop unit
Condenser:	Abbe Brightfield condenser, N.A. 1,25, Integrated iris diaphragm and filter tray With rack & pinion height adjustment
Illumination:	S-LED, brightness adjustable.
Body /power:	Sturdy body with supportive rubber and inbuilt power supply 100-240V, 50/60 Hz
Supplied with:	Dust cover, green filter, immersion oil and instruction manual
Dimensions:	1196 x 344 x 349 mm, net weight 5,9 kgs

Code	Description	Head	Plug
BOE 1200.100	Model BM-120	Binocular	Euro
BOE 1200.101	Model BM-120	Binocular	US
BOE 1200.005	Mirror attachment for BM-120		



OPTIONAL MIRROR-ATTACHMENT